

Mayor's Transport Strategy

London Borough of Merton
Public Transport Liaison Committee
17th October 2017

Tim Williams
Borough Engagement Manager
Transport for London



Page 21

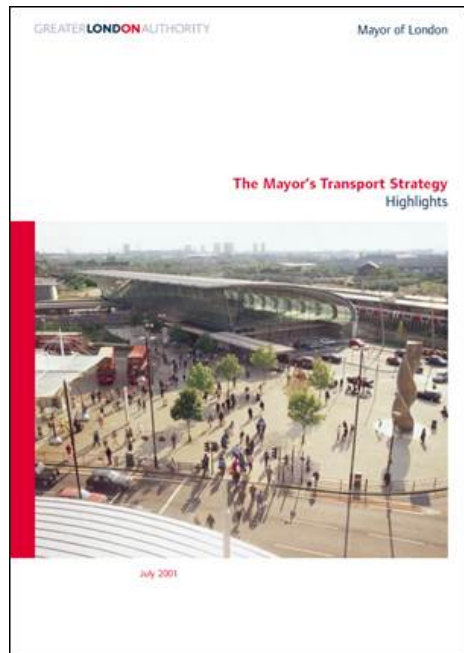
Agenda Item 3



EVERY JOURNEY MATTERS

This will be the third Mayor's Transport Strategy

Page 22



- Congestion Charging
- Transformation of the bus network
- Established TfL's multi modal role for transport in the capital



- Enabled removal of the Western extension
- Smoothing traffic and modally agnostic
- Less prescriptive



The challenge: changing the way we travel is essential

Streets and cars: London's streets should be for active travel and social interaction, but too often they are places for cars, not people.

Public transport and quality of life: Most people already use public transport regularly, but too often Londoners are not getting the quality of experience they are entitled to expect.

Future growth: Unless new ways are found to plan the city as it grows, overcrowding will see some public transport lines and stations grinding to a halt, air quality will get worse and streets and public places will become ever-more dominated by motor traffic.



Healthy Streets Approach

- The Healthy Streets Approach will ensure that transport decisions prioritise human health and quality of life.
- This is the first transport strategy anywhere in the world to apply the Healthy Streets Approach to the entire transport system of a city like London.
- Using the approach to create a city that is not dominated by traffic will improve the city in a whole range of ways.

Page 24

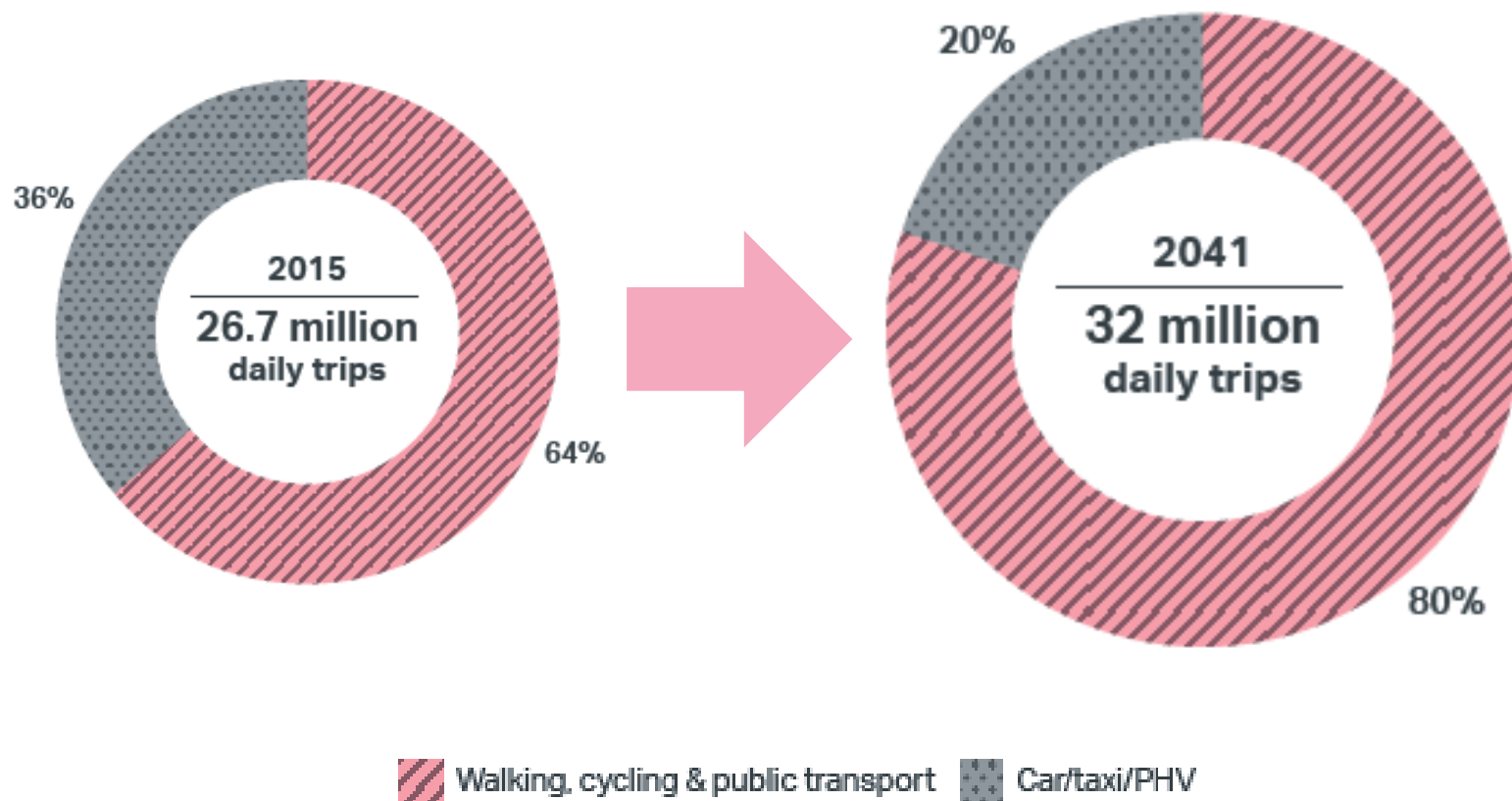


Source: Lucy Saunders



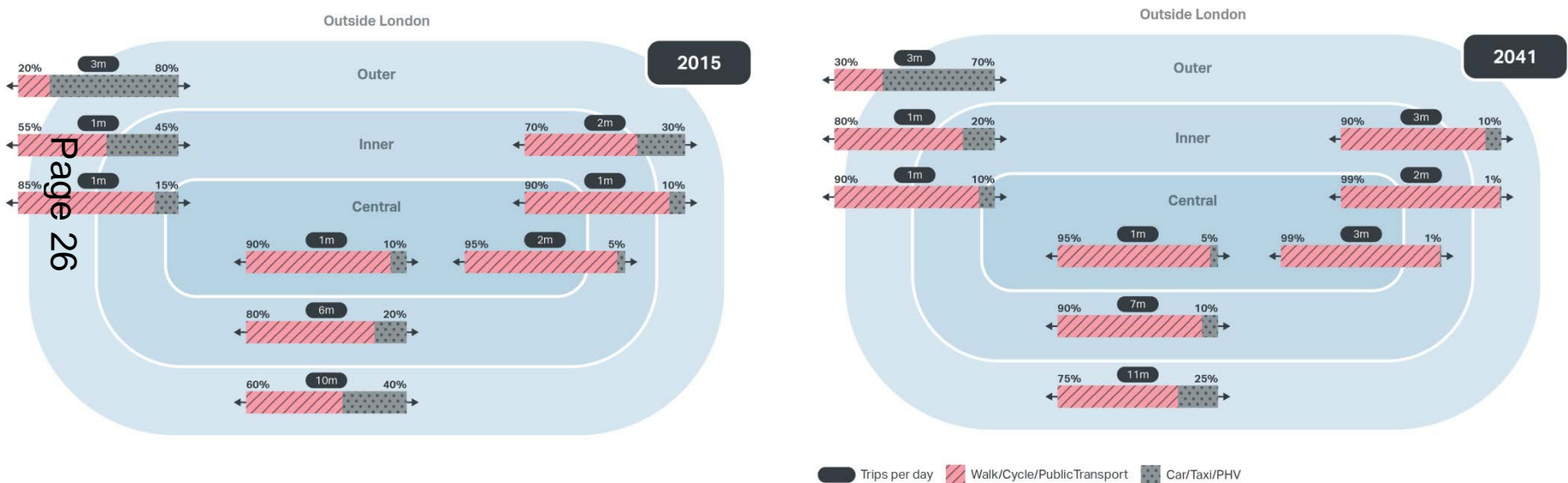
By 2041 the aim is for 80% of Londoners' trips to be on foot, by cycle or using public transport

Page 25



Changing mode shares across London

FIGURE 57: MODE SHARES FOR TRAVEL WITHIN AND BETWEEN CENTRAL, INNER AND OUTER LONDON





Healthy Streets and healthy people



20 minutes of
active travel by
2041

Vision zero for
road danger by
2041



Zero emission by 2050



10% less in central London am
peak 2026



3 million less daily car trips by 2041



A good public transport experience



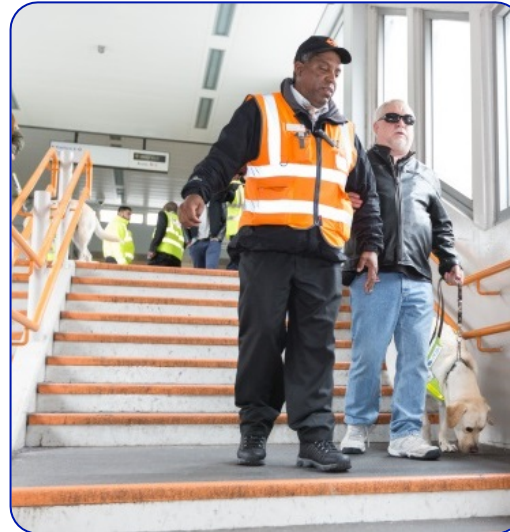
London suburban metro by the late 2020s



Crowding on rail and Underground will reduce by around 10-20 per cent



Bus speeds will improve by 10-15 per cent London-wide



Improve accessibility - halve additional journey time by 2041



The Thames will be used more for passengers and freight



New homes and jobs: transport principles of 'good growth'

Good access to public transport

High density, mixed use developments

People choose to walk and cycle

Car-free and car-lite places

Inclusive, accessible design

Carbon-free travel

Efficient freight



Mayor's Transport Strategy consultation timeline

Date	Activity
21 June	Launch of public consultation
2 October	Consultation closes
January 2018	London Assembly review period
Early 2018	Launch Final Strategy



Find out more

Visit: <https://tfl.gov.uk/corporate/about-tfl/how-we-work/planning-for-the-future/the-mayors-transport-strategy>

Page 31

Or search “*Mayor’s Transport Strategy*”



The screenshot shows the 'THE MAYOR'S TRANSPORT STRATEGY' webpage. The header includes navigation links: Home, About TfL, How we work, Planning for the future, and The Mayor's Transport Strategy. The main heading is 'THE MAYOR'S TRANSPORT STRATEGY' in large white letters on a dark background. Below this is a large image of a busy London street scene with pedestrians and a double-decker bus. The main content area is titled 'Draft Mayor's Transport Strategy' and contains the following text:

Transport is at the heart of the vision of the Mayor, Sadiq Khan, to create a city for all Londoners.

The new draft Mayor's Transport Strategy (MTS) sets out his plans to transform London's streets, improve public transport and create opportunities for new homes and jobs. To achieve this, the Mayor wants to encourage more people to walk, cycle and use public transport.

Our public consultation on these plans is now open until 2 October 2017 - take part and give us your views.

Below the main text are two sections:

- Draft MTS documents**: Read the full draft MTS and the Executive summary on the Mayor of London's website.
- Have your say**: We want to hear from Londoners. What do you think about the Mayor's draft strategy?

On the right side of the page, there is a vertical sidebar with the 'STAT DEB' logo and the text 'What m: your que London' and 'Join th'. At the bottom right, there is a 'CUR' logo.



This page is intentionally left blank